



RESEARCH ARTICLE

Partial or complete? The evolution of post-juvenile moult strategies in passerine birds

Kaspar Delhey^{1,2} | Santiago Guallar³ | Rafael Rueda-Hernández⁴ | Mihai Valcu¹ | Daiping Wang¹ | Bart Kempnaers¹

¹Max Planck Institute for Ornithology, Seewiesen, Germany

²School of Biological Sciences, Monash University, Clayton, Vic., Australia

³Department de Vertebrats, Museu de Ciències Naturals de Barcelona, Barcelona, Spain

⁴Departamento de Biología Evolutiva, Facultad de Ciencias, Universidad Nacional Autónoma de México, México DF, México

Correspondence

Kaspar Delhey
Email: kaspardelhey@gmail.com

Funding information

Max-Planck-Gesellschaft

Handling Editor: Isabella Capellini

Abstract

1. Moulting strategies in birds have evolved to avoid overlap with, or prepare for, other demanding parts of the annual cycle, such as reproduction or migration. When moulting for the first time after leaving the nest, young birds replace their typically poor-quality plumage during the post-juvenile moult. The extent of this moult varies between species from partial to complete.
2. Earlier studies, restricted to Western Palearctic birds, suggest that in most species a complete post-juvenile moult may not be possible simply because young birds are constrained by not having the same access to resources as adults, unless environmental conditions are favourable. These studies also show that complete post-juvenile moult is more common in species with poor-quality nest-grown plumage.
3. We expanded the spatial and taxonomic scope of previous studies to 1,315 species of passerines from across the world and considered both the role of constraints, plumage quality and other selective pressures favouring a complete post-juvenile moult. Thus, we test whether complete moult is more prevalent in species where nest-grown feathers are presumably of poor quality (shorter nestling period), that live in environments that foster quick plumage degradation (open habitats, high insolation and humidity), and where males are under strong sexual selection.
4. Our data reveal that 24% of species carry out a complete post-juvenile moult, and that this trait has a strong phylogenetic signal. Complete moult is more common in species that inhabit warmer regions and open habitats, show no delayed plumage maturation and have higher levels of sexual dichromatism (indicative of strong sexual selection). Neither the presumed quality of the nest-grown plumage nor living in regions with high insolation correlates with complete moult.
5. In conclusion, the evolution of complete post-juvenile moult not only depends on whether birds can perform a complete moult (i.e. suitable environmental conditions) but also on the strength of selection associated with the need of a complete moult. In particular, the necessity to keep the plumage in good condition in challenging environments and the benefits associated with producing adult-like plumage colours to attract mates or deter rivals seem to play an important role.

This is an open access article under the terms of the Creative Commons Attribution-NonCommercial License, which permits use, distribution and reproduction in any medium, provided the original work is properly cited and is not used for commercial purposes.

© 2020 The Authors. *Journal of Animal Ecology* published by John Wiley & Sons Ltd on behalf of British Ecological Society

KEYWORDS

climate, delayed plumage maturation, moult, passeriformes, plumage colour, sexual selection

1 | INTRODUCTION

Feathers are an essential feature of birds, fulfilling a variety of key functions, such as flight, thermoregulation, communication and camouflage. They are also extremely complex integumentary appendages composed of keratin which, when fully grown, are dead structures that deteriorate over time. This requires their regular replacement through moults. Moulting is considered an energetically expensive process that involves substantial physiological changes and often affects the performance of the plumage, hampering flight or reducing insulation (Newton, 2009). Hence, variation among species in the timing, speed, sequence and extent of moult has been shaped by natural selection (a) to coincide with periods when resource availability is high (Barta et al., 2006), (b) to avoid interference with other demanding life-history events such as reproduction and migration (Newton, 2009) and (c) to ensure that the plumage is in optimal shape for these events (Kiat, 2018). As a result, in most bird species, moult episodes follow a predictable sequence during their annual and life cycles (Barta et al., 2006).

In most passerine species, adults replace the entire plumage at least once per year, and this moult—which is referred to as prebasic or post-nuptial moult—generally takes place shortly after breeding (Howell et al., 2003; Jenni & Winkler, 1994). For young birds, the first moult after leaving the nest is the preformative or post-juvenile moult (Howell et al., 2003; Jenni & Winkler, 1994). Juvenile individuals commonly have plumage of lower quality than that of adults (Callan et al., 2019; Fogden, 1972) and to successfully face the challenges of early independent life their feathers will most likely need to be replaced (Kiat & Izhaki, 2016; Kiat & Sapir, 2018). However, this moult is also challenging because young birds are not as proficient as adults at obtaining food and evading predators (Heise & Moore, 2003; Hoy et al., 2015; Naef-Daenzer & Gruebler, 2016). It is no surprise then that in the majority of passerine birds the first moult leading into adulthood is partial. Commonly, most of the body plumage is replaced, but varying numbers of wing and tail feathers are retained. Nevertheless, a sizeable proportion of species carry out a complete post-juvenile moult (Ginn & Melville, 1983; Jenni & Winkler, 1994; Pyle, 1997), raising the question why not all species follow this strategy. To answer this question, we need to identify not only the constraints and costs that prevent a complete moult but also the factors that favour a complete post-juvenile moult, and establish how these vary across species.

One important constraint limiting the occurrence of complete post-juvenile moult is simply the time available for moulting. Accordingly, previous analyses (Kiat & Izhaki, 2016) show that complete post-juvenile moult is more prevalent among (a) smaller and medium-sized species compared to larger ones because larger species moult more slowly (Rohwer et al., 2009) and (b) resident species,

presumably because migratory species have less time to moult before departing to their wintering grounds. These time constraints should be most marked for species living in highly seasonal environments, where favourable conditions for moulting deteriorate rapidly after the summer. Furthermore, Kiat and Izhaki (2016) show that complete post-juvenile moult is more common at lower latitudes, where temperatures are higher and seasonality lower. The type of resources exploited also matter since species that feed on highly seasonal resources such as insects and other invertebrates are less likely to show complete post-juvenile moult than seed-eating species (Kiat & Izhaki, 2016). The latter presumably have a more stable food supply, especially towards the end of summer and autumn when moulting takes place (Barta et al., 2006; Faccio, 2018). These recent efforts exploring the evolution of moult strategies are largely restricted to passerines that occur in temperate regions and it remains to be shown whether environmental constraints can explain the occurrence of complete post-juvenile moult in a more diverse sample of species.

While resource availability may lead to a partial post-juvenile moult in many species (Kiat & Izhaki, 2016), species with ecological and life-history characteristics that require a highly functional post-juvenile plumage will be under stronger selection to moult the entire juvenile plumage. Because the post-juvenile moult replaces the plumage grown in the nest, species in which nest-grown feathers are of poorer quality—such as species with a short developmental time in the nest (Callan et al., 2019)—should be more likely to perform a complete moult. Indeed, previous studies showed that Western Palearctic species with a complete post-juvenile moult grew poorer-quality plumage in the nest (Kiat & Izhaki, 2016; Kiat & Sapir, 2018). In addition, a complete post-juvenile moult should be more likely in species that live in environmental conditions that foster feather degradation. Feathers degrade rapidly by being exposed to sunlight (Bergman, 1982; Test, 1940). Hence, species that are more exposed to strong sunshine, such as those that live in open environments and in regions with high levels of insolation should be more likely to have a complete post-juvenile moult. Feathers also degrade due to keratinolytic bacteria, which are more active in humid and warm conditions (Burt & Ichida, 2004). Thus, species living in these conditions should also be more likely to evolve complete post-juvenile moult.

Furthermore, the occurrence of complete post-juvenile moult may be linked to the intensity of sexual selection. A complete post-juvenile moult eliminates the differences in feather wear and colouration between new and old feathers that characterize first-year birds in species with partial post-juvenile moult. Such subtle cues of age—when available—may be used by conspecifics to gauge the age of a rival or potential mate (Crates et al., 2015). Age is an important determinant of breeding success in many species (Cleasby & Nakagawa, 2012), with older males being preferred as mates and better at competing for

resources (Brooks & Kemp, 2001). It could thus be hypothesized that in species in which males are under strong sexual selection, juvenile birds should be more likely to have evolved complete post-juvenile moult to conceal their age and display the most elaborate colours possible during their first breeding season (Kiat et al., 2019). This effect, however, should mainly apply to species where the plumage of first-year males resembles that of older males because a complete post-juvenile moult would make no difference in species where young males clearly differ from older males, that is, in species with delayed plumage maturation (Hawkins et al., 2012). Moreover, species with delayed plumage maturation are often under stronger sexual selection (Beauchamp, 2003), and thus statistically accounting for delayed plumage maturation is essential to assess the effects of sexual selection intensity on the extent of post-juvenile moult.

Here we undertake a large-scale analysis of the evolutionary and ecological correlates of complete post-juvenile moult in passerine birds. We collated information on the extent of post-juvenile moult (partial vs. complete) for the species of passerine birds that inhabit three well-known avifaunas (Western Palearctic, Nearctic and Australasia) and we complemented this survey with information from the primary literature on species from other regions. Following the two key hypotheses that the extent of post-juvenile moult is shaped by constraints and by variation in selective pressures associated with plumage performance, we predict that complete post-juvenile moult should be more prevalent in (a) species that are less time-constrained, such as smaller species that are resident or migrate short distances; (b) species that live in environments with less seasonal fluctuation of resources such as tropical regions; (c) species that exploit less-seasonal resources (seed-based diet); (d) species with short developmental periods in the nest, that fledge with lower-quality plumage, (e) species that live where feather deterioration is more rapid, that is, in open habitats and regions with high levels of insolation or rainfall (which promote the activity of feather-degrading bacteria) and (f) species that are under strong sexual selection such that males may benefit from achieving similar colouration to adults during their first year (species with reduced delayed plumage maturation).

2 | MATERIALS AND METHODS

2.1 | Post-juvenile moult scoring and species included

We scored each species of passerine with available moult data mentioned in the three main regional handbooks where information on moult is consistently listed [Birds of the Western Palearctic, BWP (Cramp & Simmons, 1977), Birds of North America Online, BNA (Poole, 2005) and the Handbook of Australian, New Zealand and Antarctic Birds, HANZAB (Marchant & Higgins, 1990)]. We complemented and updated this dataset with information from the primary literature (see the Data sources section) and from own unpublished field data. In total, we compiled data for $N = 1,593$ taxa.

Species for which we could obtain moult data were classified into the following categories: (a) complete post-juvenile moult, species

that moult all feathers during the post-juvenile moult; (b) partial post-juvenile moult, species that moult some but not all feathers (including species classified as having incomplete, partial and limited post-juvenile moult; Johnson & Wolfe, 2017; Pyle, 1997) and (c) partial or complete post-juvenile moult, species where some individuals or populations show complete and some partial post-juvenile moult. Migratory species that initiate their post-juvenile moult in the breeding area and complete it after arriving in the wintering grounds (e.g. many Hirundinidae) were included as having a complete post-juvenile moult, following the classification provided in our sources. However, the strategy of completing the post-juvenile moult in the wintering quarters is hard to distinguish from that of species which undergo a partial post-juvenile moult, but then perform a complete nuptial (pre-breeding) moult in their wintering grounds (e.g. many *Acrocephalus* sp.). In our first classification, these species were assigned to the partial post-juvenile moult category because post-juvenile and nuptial moult were considered as separate moulting events. However, given the difficulty of separating moult events in some cases (Jenni & Winkler, 1994), and the fact that from a functional point of view all these species perform a complete moult before their first breeding season, we computed a new response variable (complete moult before first breeding: yes/no). Species were considered to have a complete moult before the first breeding season if they had either a complete post-juvenile moult or if we had evidence that they performed a complete nuptial moult. We note that the extent of nuptial moult is often not well known. Nevertheless, using this new response variable allowed us to assess whether results differed compared to the original post-juvenile moult classification. For each species, we also estimated data quality by recording whether or not the moult type assessment was based on limited data (usually reported in text by indicating that limited information was available and/or that only few specimens have been examined).

After classifying moult patterns, we matched the scientific names used in our moult data sources with the species names used by our source of phylogenetic information: www.birdtree.org (Jetz et al., 2012). After matching species names, we ended up with 94 species for which we had more than one source of information on post-juvenile moult, and the classification agreed for 81 species. In the remaining cases, we either used the more recent or comprehensive source ($N = 2$ species), or we assigned 'complete or partial' ($N = 11$ species for which one source assigned one population as having complete post-juvenile moult and another source assigned a different population as having partial post-juvenile moult). This resulted in a final sample of 1,315 species for which we had data on post-juvenile moult.

2.2 | Explanatory variables

2.2.1 | Variables based on distribution ranges

We used distribution ranges (as vectorized polygons) from Birdlife International (<http://datazone.birdlife.org/>) and overlapped these

with raster layers of annual mean temperature (BIOCLIM BIO 1, resolution 0.0083 decimal degrees), annual precipitation (BIOCLIM BIO12, 0.0083 decimal degrees), mean annual insolation, and the amount of solar energy received by a given surface (W/m^2 , 0.25 decimal degrees). Annual mean temperature and annual precipitation were obtained from Karger et al. (2017) while insolation was obtained by averaging monthly estimates for the years 2006–2019 obtained from <https://neo.sci.gsfc.nasa.gov/>. Using the function 'exact_extract' from the R package 'EXTRACTR' (Baston, 2020), we averaged climatic and insolation values for all raster cells covered by a species' distribution. We computed climatic and insolation estimates separately for the breeding and year-round distribution ranges and for the non-breeding distribution range of migratory species. Subsequently, we averaged data for the breeding or year-round resident and non-breeding distribution to obtain overall estimates for the entire species distribution. This procedure may not be entirely accurate when quantifying the climate experienced by migratory species because they do not experience the winter in their breeding grounds. Therefore, climatic variables may be biased in migratory species, particularly in long-distance migrants. To determine whether this potential bias drives some of the climatic effects that we detect (see Section 3), we re-ran analyses excluding long-distance migrants (species with migratory distances $>2,000$ km; Dufour et al., 2020). Finally, we computed absolute latitude as the distance in degrees between the centroid of each species' breeding or year-round resident distribution (avoiding the non-breeding distribution) and the equator using function 'sf_centroid' from the package 'sf' (Pebesma, 2018). This information was available for 1,311 species.

2.2.2 | Other explanatory variables

(a) Body mass (\log_{10} -transformed, $N = 1,287$ species) was obtained mainly from Dunning et al. (Dunning, 2008) and Wilman et al. (2014) as collated by Mcqueen et al. (2019). (b) Migration distance (in km, data for $N = 1,315$ species) was obtained from Dufour et al. (2020) (variable called 'distance_quantile_ALL' in their dataset). In this dataset, migration distance was missing for 10 resident species and these were assigned migration distance of 0 (Dufour et al., 2020). (c) Diet, the percentage of the diet composed by seeds, obtained from Wilman et al. (2014, data for $N = 1,315$ species). (d) Length of the nestling period (in days, $N = 860$ species), collated from the Handbook of the Birds of the World (HBW; del Hoyo et al., 2018) and Cooney et al. (2020). (e) Habitat openness ($N = 1,311$ species). Based on the habitat use data from Birdlife International (<http://datazone.birdlife.org/>), we assigned each major habitat used by each species an openness score that varies from 1 (forests) to 4 (coastal and marine environments) and averaged these scores for each species. For more details on the scores assigned to each type of habitat, see Supporting Information. (f) Sexual dichromatism, as an estimator of the strength of sexual selection on males, scored based on scanned book plates from the HBW. Sexual dichromatism was computed for each species as the average difference in Red–Green–Blue (RGB)

values between males and females across nine plumage patches as described in Mcqueen et al. (2019; $N = 1,293$ species). Book plates provide good approximations of colour variation measured directly on museum specimens (Dale et al., 2015; Delhey et al., 2019). (g) Delayed plumage maturation ($N = 1,297$ species), scored on a three-level scale (0 = species where first-year males are identical or very similar to second-year adult males, 1 = species where first-year individuals are similar but on average less ornamented than second-year males, and 2 = species which have a clearly distinct first-year plumage and often take several years to reach adult plumage).

2.3 | Statistical analyses

All analyses were carried out within the R statistical environment (R Development Core Team, 2019). We used the package `BTW` (Griffin, 2018) to interact with the program BayesTraits V3 (http://www.evolution.rdg.ac.uk/BayesTraitsV3.0.2/BayesTrait_sV3.0.2.html) from within R. We used the Multistate module in BayesTraits to estimate the rates of evolutionary shifts between the different types of post-juvenile moult using maximum likelihood across a sample of 100 phylogenies. We considered two alternative transition models: a model where gains of complete post-juvenile moult happen at a different rate than losses, and a model where both rates are set to be equal. We compared the performance of both models using a likelihood-ratio test. As BayesTraits allows polymorphic traits, species with both partial and complete post-juvenile moult were considered polymorphic. All other analyses require binary traits and hence we classified all species with partial/complete post-juvenile moult as being able to carry out a complete moult.

We quantified the phylogenetic signal of post-juvenile moult using Fritz and Purvis' D (2010) for binary traits using the function 'phylo.d' from the R package `CAPER` (Orme et al., 2018) computed across 100 phylogenies (see below for justification). D values close to 0 indicate a strong phylogenetic signal as expected from a Brownian motion type of evolution (equivalent to $\lambda = 1$ for a continuous trait), while values close to 1 indicate random evolutionary patterns (essentially little phylogenetic signal, equivalent to $\lambda = 0$ for a continuous trait; Fritz & Purvis, 2010). We also used a permutation procedure implemented in the same function (1,000 permutations) to test whether values of D are statistically different from 0 and 1. For visual purposes, we also reconstructed ancestral states for the different types of post-juvenile moult using stochastic mapping across 100 phylogenies as implemented by function 'make.simmap' in the package `PHYTOOLS` (Revell, 2012) using the model that allows different rates for gains and losses (the best supported model identified by BayesTraits, see Section 3).

To quantify the associations between our explanatory variables and the occurrence of complete post-juvenile moult, we used logistic phylogenetic regression (Ives & Garland, 2010) as implemented in the function 'phyloglm' from the package `PHYLOLM` (Tung Ho & Ané, 2014). The phylogenetic structure in the residual distribution is estimated and corrected by the parameter alpha, which reflects

the overall rate of transition between binary states. Small values of alpha (close to zero) correspond to stronger phylogenetic effects (Ives & Garland, 2010). All models were run across a sample of 100 phylogenies (see justification below) using the Ericsson backbone obtained from www.birdtree.org (Jetz et al., 2012) to account for phylogenetic uncertainty. These phylogenetic supertrees include nearly all bird species and have been obtained using available genetic data in combination with taxonomic information to randomly place species without genetic data using a birth–death polytomy resolver (Rabosky, 2015). Based on simulations, Rabosky (2015) suggested that this random placement of species may bias comparative analyses by reducing the phylogenetic signal in trait data. However, this conclusion was based on simulations with closely related groups of species, within taxonomic families, and Rabosky (2015) suggests that biases should be much less marked if the analyses are focused on taxonomically broad and sparse datasets. Given that our data include most passerine families with relatively sparse sampling within families, we expect biases to be minor. Moreover, most of the species included in our samples have been placed in the phylogeny using genetic data ($N = 1,176$ species).

In each case, results from the 100 models were summarized using Rubin's rules (Nakagawa & de Villemereuil, 2019). This approach enabled us to compute average estimates, their standard errors, associated test statistics (t values), degrees of freedom and p -values that incorporate phylogenetic uncertainty adjusting for sample sizes (Nakagawa & de Villemereuil, 2019). We also computed 'relative efficiency' which reflects, for each parameter, the efficacy of the process of accounting for phylogenetic uncertainty by comparing the used number of phylogenies with the theoretical efficacy achieved using an infinite number of phylogenies. This value varies between 0 and 1, and achieving values above 0.99 is recommended (Nakagawa & de Villemereuil, 2019). We achieved this level with 100 phylogenies for all models and parameters, adequately capturing phylogenetic uncertainty in our analyses. In some cases (see Tables S1–S14), a few models (all <10) failed to converge and were discarded, but relative efficiency values were still >0.99.

Because some of the explanatory variables had missing values, sample sizes differed between datasets. We therefore compiled two main datasets. For dataset 1 ($N = 1,266$ species), we subset the data to include the following: body mass, latitude, temperature, precipitation, insolation, habitat openness, delayed plumage maturation, sexual dichromatism and migration distance. For dataset 2 ($N = 860$ species), we included the variables mentioned above plus time nestlings spent in the nest. For each dataset, we ran models including each explanatory variable as sole predictor and one model with all variables together. However, we could not fit all covariates in the same model due to high levels of collinearity between latitude and temperature ($r = -0.83$), latitude and insolation ($r = 0.60$) and temperature and insolation ($r = 0.77$). We therefore fitted three alternative models: one with latitude, one with temperature and one with insolation. Finally, we re-ran these three multivariate models for a subset of dataset 1, eliminating species for which moult information was more limited ($N = 245$) to check whether results changed.

All explanatory variables were centred and scaled. For all models, we computed two values of R^2 using function 'R2.lik' from the package 'RR2' (Ives & Li, 2018). This function compares the likelihood of the focal model with a null model. We compared it to two different null models: (a) a simple logistic regression without covariates and without accounting for the effect of phylogeny and (b) a phylogenetic logistic regression without covariates. Thus, the first R^2 value should quantify the effects of both covariates and phylogeny (equivalent to $R^2_{\text{conditional}}$), while the second estimates the contribution of covariates independent of phylogeny (equivalent to R^2_{marginal}).

3 | RESULTS

We obtained information on post-juvenile moult for 1,315 species belonging to 83 of the 97 families of passerine birds. Of those, 214 species (16.3%) had complete post-juvenile moult, 105 (8.0%) had partial or complete post-juvenile moult and 996 (75.7%) had partial post-juvenile moult. The occurrence of complete post-juvenile moult was much more common in certain bird families than in others (Figure 1). The phylogenetic signal for binary traits D averaged 0.014 across 100 phylogenies (range: -0.015 to 0.046), which is indicative of a strong phylogenetic structure. Permutation tests indicated that values of D were not significantly different from 0 (Brownian motion, average $p = 0.48$, range: 0.37 – 0.58), but were always significantly different from 1 (random pattern, all $p < 0.001$).

The analysis of transition rates between states suggests that transitions from partial to complete post-juvenile moult occurred at a much lower rate (average: 0.0084 , range: 0.007 – 0.01) than the reverse (average: 0.024 , range: 0.019 – 0.03), and the model allowing different transition rates was better supported than the equal-rates model (likelihood-ratio test across all phylogenies, mean $\chi^2 = 26.98$, all $p < 0.001$). This analysis also revealed that the most likely state at the root of the phylogeny was partial post-juvenile moult (probability of root being partial moult, average 0.85 , range: 0.75 – 0.92). Similarly, stochastic mapping also suggests that the ancestral trait for passerines was partial post-juvenile moult, and that complete post-juvenile moult has been gained independently multiple times and often lost (Figure 1, e.g. Alaudidae, Hirundinidae, Furnariidae, etc.). On average, across the 100 stochastic mapping reconstructions and phylogenies, shifts from partial to complete happened 98 times and from complete to partial 88 times.

Logistic phylogenetic regressions using the most complete dataset (dataset 1, $N = 1,266$, of which 313 species are classified as having complete post-juvenile moult) revealed that complete post-juvenile moult is more prevalent in (a) species found at lower latitudes (Figure 2c,i), in warm (Figure 2d,i) and wet regions (Figure 2g,i), (b) species that inhabit open habitats (Figure 2f,i), (c) species where first-year males resemble adults in appearance (species without delayed plumage maturation, Figure 2j,i) and (d) species with higher levels of sexual dichromatism (Figure 2i,i). Full model results are provided in Tables S1–S3.

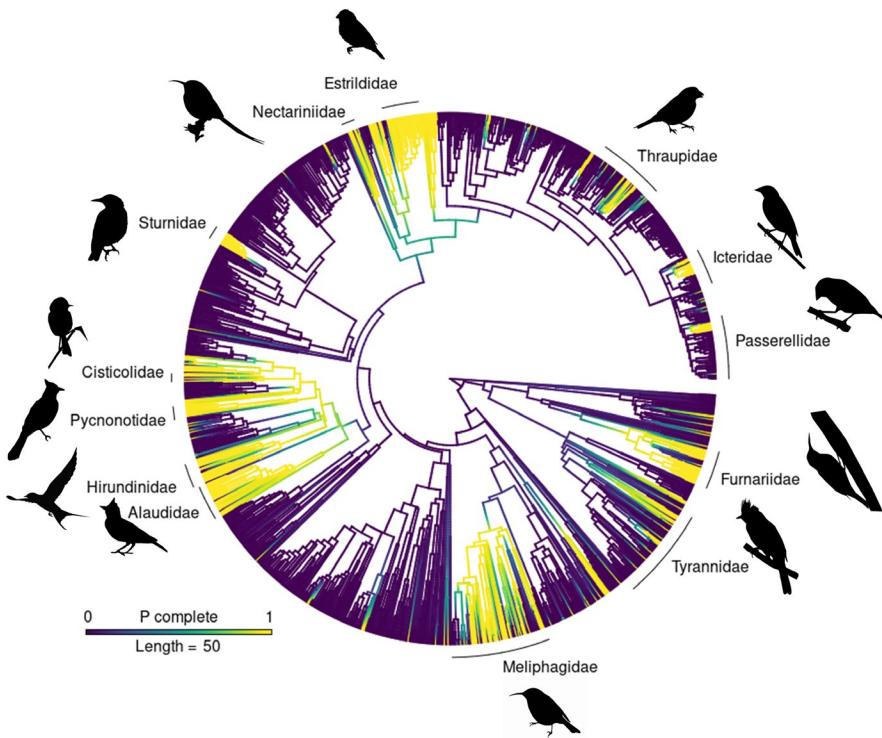


FIGURE 1 Phylogenetic distribution of post-juvenile moult types for 1,315 species of passerine birds. Ancestral state reconstruction based on 100 stochastic mappings on one example phylogeny (for the purpose of illustration), where the colour palette represents ancestral trait reconstruction depicting the probability of having complete post-juvenile moult (yellow = 1). Intermediate colour values represent uncertainty surrounding the location of evolutionary transitions in the phylogeny. Silhouettes (retrieved from www.phylopic.org) represent some selected families with high prevalence of complete post-juvenile moult. The length of the colour palette represents 50 million years on the phylogeny

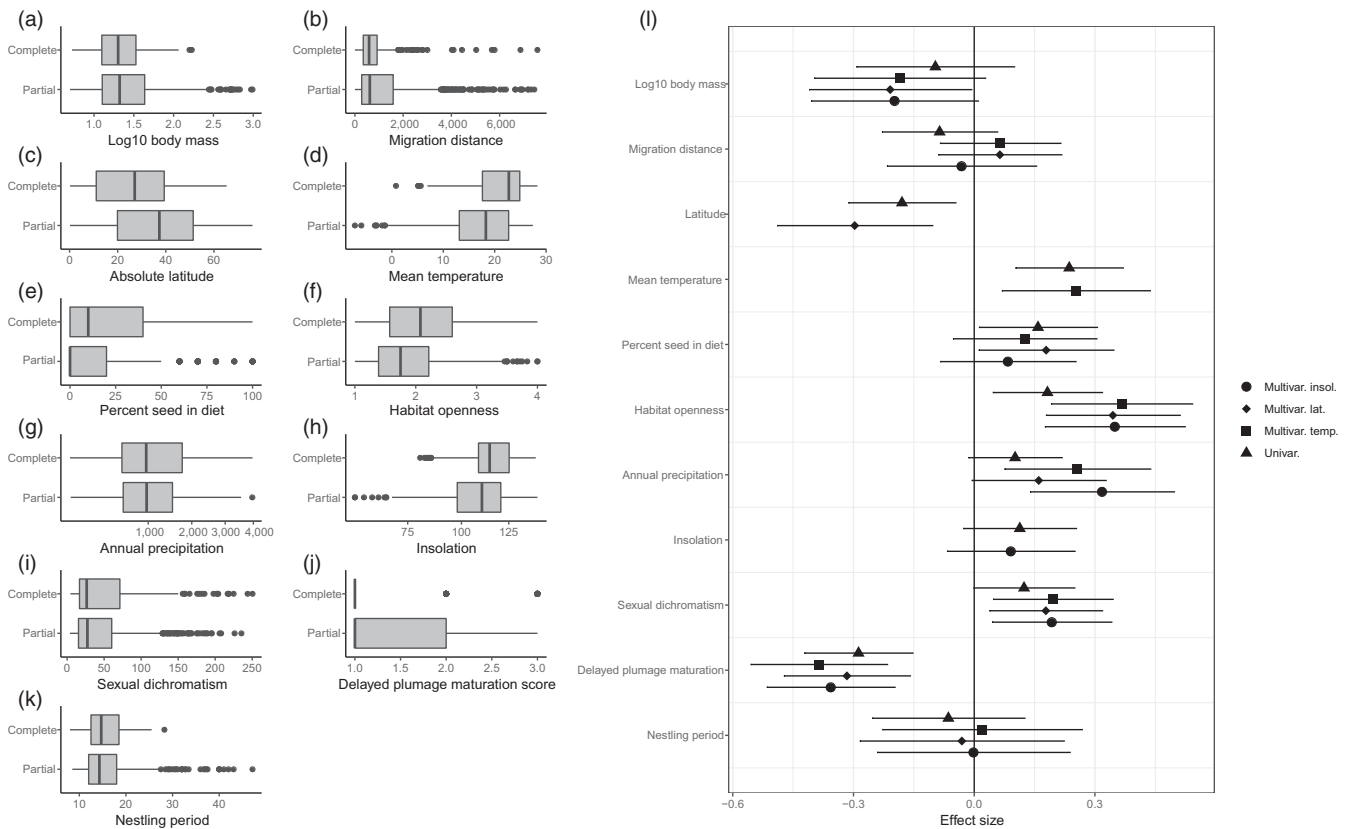


FIGURE 2 Boxplots (a–k) of raw data without phylogenetic correction showing differences between species with partial and complete post-juvenile moult, and a forest plot (l) depicting effects and 95% CIs of explanatory variables included in the phylogenetic logistic regression models. Because there were many missing values in one covariate (nestling period), we carried out the analyses on two datasets: dataset 1 ($N = 1,266$ species), included all covariates except for the duration of the nestling period, and dataset 2 ($N = 860$ species) which also included nestling period. In addition, due to collinearity, latitude, insolation and annual mean temperature could not be included in the same model and were fitted in three separate models. Full model results and output can be found in Tables S1–S7. Boxplots show median and interquartile ranges and outliers (black dots); in the forest plots 95% CIs that do not overlap 0 correspond to statistically significant effects ($p < 0.05$)

Smaller species, and species that feed on seeds were more likely to have complete post-juvenile moult, but these effects were generally not statistically significant (Figure 2l). There were no statistically significant effects of insolation or migration distance (Figure 2l). The phylogenetic signal was strong in all cases, as indicated by the small values of alpha (0.02–0.03, see Tables S1–S14). Multivariate models accounted for ~54% of the variation in post-juvenile moult type (multivariate models with latitude or temperature, $R^2_{\text{conditional}} = 0.54$), but most of this is due to shared phylogenetic history. The explanatory variables together explained 12%–14% of the variation in moult pattern. Out of the three multivariate models tested, the one with latitude had the lowest AICc value (860, Table S1), followed by the model with temperature (AICc = 864, Table S2) and the insolation model (AICc = 873, Table S3). Fitting explanatory variables as single predictor variables yielded qualitatively similar effects, but these were not always statistically significant (e.g. sexual dichromatism, Figure 2l, Table S4). Restricting the dataset to include species for which there was also information on the length of the nestling period (dataset 2, $N = 860$, of which 213 species with complete post-juvenile moult) revealed that species with fast-growing nestlings were not more likely to have complete post-juvenile moult (Figure 2k,l, full model results are shown in Tables S5–S7).

We assessed the robustness of our results through three additional analyses: (a) using an alternative moult classification, (b) excluding species where moult data are more limited and (c) excluding long-distance migratory species to assess whether potential inaccuracies in the computation of their climatic variables is driving climatic effects in the analyses. (a) We used an alternative classification of moult by scoring whether there is complete moult before first breeding regardless of moult type. This analysis shows similar results (Tables S8–S10), except for the migration distance effect, which becomes statistically significant, suggesting that a complete moult before the first breeding season is more likely in species with longer migration distances. (b) We eliminated species for which moult information was based on limited information ($N = 1,021$ species, 245 species excluded). The results were similar (Tables S11–S13), except for the sexual dichromatism effect, which became statistically non-significant. (c) We excluded long-distance migratory species to assess the effect of potential inaccuracies in the climatic variables. However, the effects of temperature and rainfall did not change (Table S14), suggesting that our conclusions are robust.

4 | DISCUSSION

Our survey across >1,300 species, which includes members of most families of passerines, revealed that nearly 25% of the species have at least some individuals or populations that carry out a complete post-juvenile moult. Ancestral trait reconstructions indicate that complete post-juvenile moult has been gained and lost multiple times and is highly phylogenetically conserved (Figure 1a). Our comparative analyses identified several ecological, environmental and life-history predictors that together account for >10%

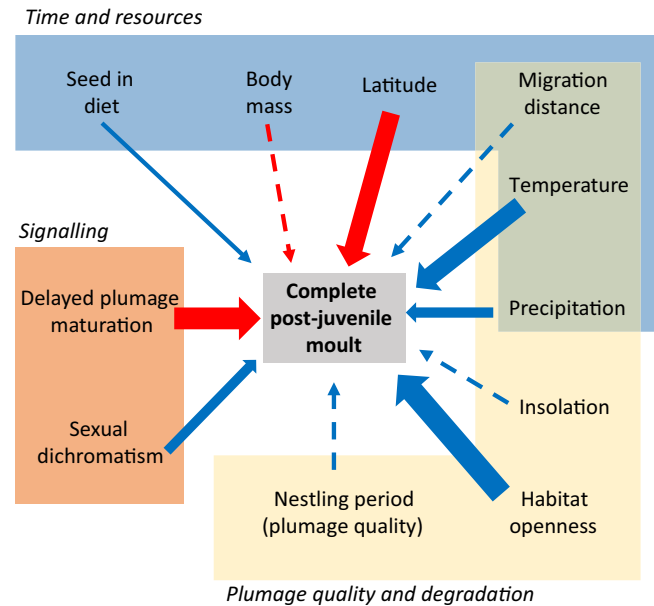


FIGURE 3 Summary of effects associated with complete post-juvenile moult in passerine birds. Arrow thickness represents the strength of the effect (blue positive effects and red negative effects) and dashed lines represent non-significant effects based on Figure 2l. Effects have been grouped into three broad categories: constraints imposed by available time and food resources (light blue), selective forces associated with plumage quality and degradation (light yellow) and selective forces associated with the ornamental signalling functions of plumage (orange)

of the variation in the extent of the post-juvenile moult (considered as a binary trait: partial vs. complete; Figure 2). Our results show an increased prevalence of complete moult in warm, favourable environmental conditions with low-resource seasonality, confirming earlier work (Kiat & Izhaki, 2016), and indicating the importance of constraints. However, our study also indicates the important roles of plumage degradation and visual signalling, highlighting the selective pressures that favour complete post-juvenile moult (Figure 3).

We hypothesized that lower-quality juvenile plumage and conditions that foster rapid plumage degradation should constitute strong selective factors favouring a complete post-juvenile moult. The quality of plumage in young birds varies greatly and is positively correlated with the time they spend in the nest (Callan et al., 2019). However, our data clearly show that species with shorter nestling periods are not more likely to have a complete post-juvenile moult (Figure 2), despite their presumed poorer quality plumage. This is surprising given that previous work detected clear associations between feather quality and post-juvenile moult (Kiat & Izhaki, 2016; Kiat & Sapir, 2018). By necessity, due to data availability, we used a proxy of feather quality (nestling period) rather than feather quality itself and this could have weakened our inference. Moreover, it is possible that the direction of causation is reversed, meaning that increased quality of nest-grown plumage is an evolutionary response to partial post-juvenile moult (Kiat & Sapir, 2018). Rigorous tests of these ideas, which allow general conclusions beyond Western

Palaearctic species (Kiat & Izhaki, 2016; Kiat & Sapir, 2018), will require more data on feather quality.

Plumage degradation is continuous and starts already in the nest, in part through the action of feather-degrading bacteria (Azcarate-García et al., 2020), which are more active and prevalent in warm and humid environments (Burt & Ichida, 2004). Accordingly, we found that both temperature and, to a lesser extent, precipitation correlated positively with the likelihood of complete post-juvenile moult (Figure 2). Our study thus suggests that increased risk of feather degradation may favour the evolution of complete post-juvenile moult. Feathers also degrade through exposure to sunlight (Bergman, 1982; Surmacki et al., 2011; Test, 1940), and our analyses revealed that species living in open environments, which are more exposed to sunlight, are more likely to have a complete post-juvenile moult (Figure 2k). Following this logic, we also expected that species living in regions with higher levels of solar radiation would be more likely to undergo a complete post-juvenile moult. However, this was not the case: the effect of insolation was positive but clearly not statistically significant (Figure 2). Because the effect of insolation may apply mainly to species living in open habitats, we further tested for a positive interaction between insolation and habitat openness, but the interaction was negative and not statistically significant ($t = -1.045$, $p = 0.29$). Alternatively, the association between complete post-juvenile moult and habitat openness may not only be caused by faster feather degradation in open habitats but also because birds inhabiting such environments rely more on their flying abilities to escape predators, display (Menezes & Santos, 2020) or forage, than species living in closed environments (Guallar et al., 2009). A complete post-juvenile moult would ensure a less worn plumage ready to cope with these challenges during their first year.

The lack of an insolation effect was unexpected, in particular, because insolation strongly correlated with temperature and latitude (see Section 2), two covariates that are linked to complete post-juvenile moult in previous (Kiat & Izhaki, 2016) and in our analyses (Figure 2). Latitudinal gradients in the prevalence of complete post-juvenile moult have been interpreted as evidence that warmer, tropical climates with lower seasonality impose less stringent temporal constraints on post-juvenile moult because environmental conditions do not deteriorate as rapidly as in temperate regions after the summer (Kiat & Izhaki, 2016). Our results are consistent with this interpretation, as are studies of intraspecific variation in moult extent, which reveal that individuals from populations living at lower latitudes and in warmer regions often show more extensive post-juvenile moults (Chabot et al., 2018; Christmas et al., 1989; Ginn & Melville, 1983; Jenni & Winkler, 1994; Rockey, 2016). Furthermore, Kiat et al. (2019) showed that the extent of post-juvenile increased over time in several species of passerines, most likely as a result of climate warming. Warmer or milder climatic conditions allow for earlier breeding (one of the best-documented effects of climate change; Scheffers et al., 2016), resulting in earlier fledging which leads to an earlier start of the post-juvenile moult. Both correlational and experimental data show that birds that start moulting earlier

in the year moult slower and achieve more extensive post-juvenile moults (Rymkevich & Bojarinova, 1996; Ryzhanovskiy, 2017; Serra et al., 2007).

Our results provide macro-evolutionary support for the hypothesis that time constraints constitute an important factor explaining variation in the completeness of post-juvenile moult. We also predicted that species that eat mostly seeds—a resource that should decline less rapidly in late summer than insects or fruit—should be more likely to evolve complete post-juvenile moult (Kiat & Izhaki, 2016). While the effect was in the predicted direction, it was not statistically significant in all models (Figure 2). Two other factors associated with time constraints, namely body size (large species moult slower; Rohwer et al., 2009) and migration distance (long-distant migrants are under stronger time constraints; Kiat & Izhaki, 2016; Kiat & Sapir, 2017) did not show statistically significant effects (Figure 2). While the body mass effect was in the expected direction (negative), the effect of migration distance tended to be positive in the multivariate models (Figure 2l). Thus, rather than acting as a constraint, longer migration distances tend to favour the evolution of complete post-juvenile moult. One possibility is that species that migrate farther require plumage in top condition to complete their journeys, and this should apply to flight feathers in particular. Hence, we further tested this idea by focusing on whether species moult all primaries during their post-juvenile moult (obviously, all species with complete post-juvenile moult all primaries, but 97 species with partial post-juvenile moult do so as well). Repeating the analyses in Figure 2 using complete primary moult (no/yes) as response variable revealed that the effect of migration distance was clearly not statistically significant. However, the effect of migration distance became statistically significant when we used an alternative moult classification that indicated whether or not a species carries out a complete moult before their first breeding season (either a complete post-juvenile moult or a complete nuptial moult; Tables S8–S10). We note that the main difference between the two moult classifications stems from the fact that many long-distance migratory species that carry out only a partial post-juvenile moult, perform a complete nuptial moult in their tropical wintering grounds. A complete moult in these species might be more likely because of favourable conditions (reduced constraints; Kiat & Sapir, 2018) while new plumage may be advantageous to successfully complete the spring migration (selective advantage). Thus, although the effect is not clear in all analyses, our results suggest that migration distance may play a role in shaping moult strategies during the first year.

Beyond the constraints imposed by the available resources (food and time) and the feather-degradation potential of the environment, our results also suggest that the signalling functions of the plumage may have played a role in the evolution of complete post-juvenile moult. One of the strongest predictors of complete post-juvenile moult was the occurrence of delayed plumage maturation (DPM), whereby species with DPM were less likely to have a complete post-juvenile moult (Figure 2). In species with DPM, first-cycle males differ markedly in colouration from older males,

and these young males usually have lower mating success or forego reproduction entirely, but benefit from reduced aggressive interactions with older males (Greene et al., 2000; Hawkins et al., 2012; Senar et al., 1998). If there is less pressure to look attractive in the first breeding season, replacing all juvenile feathers (often differently coloured from the adult plumage) during the post-juvenile moult may not be beneficial, and hence sexual selection on the extent of post-juvenile moult would be relaxed. In some species, a partial post-juvenile moult may also provide a flexible mechanism for individuals to signal lower status in the same way as DPM, but allowing other—presumably higher-quality individuals—to achieve a more extensive moult and more adult-like plumage, possibly at the expense of increased aggression by older males (López et al., 2005; Senar et al., 1998).

In species without DPM, on the other hand, first-year males may benefit from erasing any subtle cues of age (e.g. moult limits, the differences between old and newly moulted feathers), associated with partial post-juvenile moult. Resembling adults may be more important if the potential rewards are high, for instance, when sexual selection on males is stronger. Indeed, we found that sexual dichromatism—a proxy for the intensity of sexual selection on male birds (Dale et al., 2015; Dunn et al., 2001)—correlates positively with the likelihood of a complete post-juvenile moult (Figure 2). Because the effects of sexual selection intensity should be more marked in species without DPM, one could also predict a negative interaction between DPM and sexual dichromatism. However, our analyses do not support this idea: the interaction term was positive and not statistically significant ($t = 1.16$, $p = 0.24$). Thus, the effects of DPM and of sexual dichromatism seem largely independent of each other, although the sexual dichromatism effect is only statistically significant after accounting for the effects of DPM and other covariates (Figure 2).

Consistent with the hypothesis that sexual selection affects moult, males moult more extensively than females in many (Bojarinova et al., 1999; Crates et al., 2015; Illera & Atienza, 2002; Jenni & Winkler, 1994; Kiat et al., 2019; Senar et al., 1998) but not all (Jenni & Winkler, 1994; Kiat et al., 2019; Pérez-Granados, 2020) species with partial post-juvenile moult. This suggests that stronger sexual selection on males may have led to sexual dimorphism in moult extent. Thus, we could envision a scenario where strong sexual selection favours more extensive post-juvenile moult, possibly because moulting more feathers signals higher quality (Gosler, 1991; Minias & Iciek, 2013; Minias et al., 2015; Pagani-Núñez & Hernández-Gómez, 2013; Vagasi et al., 2012, but see Crates et al., 2015). Within species, individuals that moult earlier in the season usually moult more slowly and more extensively (Rymkevich & Bojarinova, 1996; Ryzhanovskiy, 2017; Serra et al., 2007), which, in turn, may produce both higher-quality plumage (Dawson et al., 2000) and more colourful feathers (Ferns & Hinsley, 2008; Griggio et al., 2009; Serra et al., 2007). As a consequence, strong directional selection on ornamental plumage may result in complete post-juvenile moult in males, and also in females, either due to genetic correlation or through sexual or social selection acting directly on females (Tobias

et al., 2012). Puzzlingly, the extent of post-juvenile moult increased more in females than in males in response to historical climate warming trends, at least in a few sexually dichromatic species (Kiat et al., 2019), suggesting that moult in females may be more sensitive to environmental variation. Finally, while many species develop their first-year plumage colours during the post-juvenile moult, some species do so in a different moulting event, referred to as the nuptial or pre-breeding moult. Interestingly, species that change into breeding colours by means of a nuptial moult show remarkable parallels with those that undergo a complete post-juvenile moult: nuptial moult is also more prevalent in species with more marked sexual dichromatism (Mcqueen et al., 2019).

In sum, our analyses show that a combination of multiple, fundamentally different mechanisms, explain sizeable amounts of variation (>10%) in the extent of post-juvenile moult between species (Figure 3). Our results clearly highlight that constraints faced by young birds during their first independent moult (time and food) are important, but are not the only factors that determine whether a species undergoes a complete post-juvenile moult. Variation between species in the strength of natural and sexual selection acting on functional or ornamental roles of plumage has important effects as well, and suggests that the extent of post-juvenile moult is not simply the outcome of a best-of-a-bad-job situation. In particular, we provide evidence for the surprisingly strong effects of delayed plumage maturation and sexual selection, which seem to have pervasive effects shaping the evolution of different types of moult in birds (Figuerola & Jovani, 2002; Mcqueen et al., 2019; Peters et al., 2013).

ACKNOWLEDGEMENTS

We are indebted to the following colleagues that assisted with securing information on post-juvenile moult: Hyun-Young Nam (Migratory Bird Centre, Korea National Park Research Institute, Wonju, Korea), Chang-Yong Choi (College of Agriculture and Life Sciences, Seoul National University Seoul, Korea), Noboru Nakamura (Bird Migration Research Centre, Yamashina Institute for Ornithology Japan) and Marc Herremans (Natuurpunt, Mechelen, Belgium). We thank the Associate Editor, two anonymous reviewers and Y. Kiat for constructive comments. The authors declare no conflicts of interest. Open access funding enabled and organized by Projekt DEAL.

AUTHORS' CONTRIBUTIONS

B.K. and K.D. conceived the study; K.D., S.G., R.R.-H., M.V. and D.W. collected the data; K.D. and M.V. analysed the data; K.D. and B.K. wrote the manuscript with input from all co-authors.

DATA AVAILABILITY STATEMENT

The data are available at <https://doi.org/10.6084/m9.figshare.12925895.v1> (Delhey et al., 2020).

ORCID

Kaspar Delhey  <https://orcid.org/0000-0001-5190-5406>

Santiago Guallar  <https://orcid.org/0000-0002-1121-1968>

Mihai Valcu  <https://orcid.org/0000-0002-6907-7802>
 Daiping Wang  <https://orcid.org/0000-0002-9045-051X>
 Bart Kempnaers  <https://orcid.org/0000-0002-7505-5458>

REFERENCES

- Azcárate-García, M., González-Braojos, S., Díaz-Lora, S., Ruiz-Rodríguez, M., Martín-Vivaldi, M., Martínez-Bueno, M., Moreno, J., & Soler, J. J. (2020). Interspecific variation in deterioration and degradability of avian feathers: The evolutionary role of microorganisms. *Journal of Avian Biology*, 2020, e02320. <https://doi.org/10.1111/jav.02320>
- Barta, Z., Houston, A. I., McNamara, J. M., Welham, R. K., Hedenström, A., Weber, T. P., & Feró, O. (2006). Annual routines of non-migratory birds: Optimal moult strategies. *Oikos*, 112, 580–593. <https://doi.org/10.1111/j.0030-1299.2006.14240.x>
- Baston, D. (2020). *exactextractr: Fast extraction from raster datasets using Polygons*. R package version 0.2.1.
- Beauchamp, G. (2003). Delayed maturation in birds in relation to social foraging and breeding competition. *Evolutionary Ecology Research*, 5, 589–596.
- Bergman, G. (1982). Why are the wings *Larus f. fuscus* so dark? *Ornis Fenn*, 59, 77–83.
- Bojarinova, J. G., Lehtikoinen, E., & Eeva, T. (1999). Dependence of postjuvenile moult on hatching date, condition and sex in the great tit. *Journal of Avian Biology*, 30, 437–446. <https://doi.org/10.2307/3677016>
- Brooks, R., & Kemp, D. J. (2001). Can older males deliver the good genes? *Trends in Ecology & Evolution*, 16, 308–313. [https://doi.org/10.1016/S0169-5347\(01\)02147-4](https://doi.org/10.1016/S0169-5347(01)02147-4)
- Burt, E. H., & Ichida, J. M. (2004). Gloger's Rule, feather-degrading bacteria, and color variation among song sparrows. *The Condor*, 106, 681–686. <https://doi.org/10.1650/7383>
- Callan, L. M., La, S. F. A., Martin, T. E., & Rohwer, V. G. (2019). Higher nest predation favors rapid fledging at the cost of plumage quality in nestling birds. *The American Naturalist*, 193(5), 717–724. <https://doi.org/10.1086/702856>
- Chabot, A. M. Y. A., Hobson, K. A., Craig, S., & Loughheed, S. C. (2018). Molt in the Loggerhead Shrike *Lanius ludovicianus* is influenced by sex, latitude and migration. *Ibis*, 160, 301–312. <https://doi.org/10.1111/ibi.12551>
- Christmas, S. E., Christmas, T. J., & Parr, A. J. (1989). Geographical variation in greater covert moult in first winter Coal Tits *Parus ater*. *Bird Study*, 36, 88–90. <https://doi.org/10.1080/00063658909477009>
- Cleasby, I. R., & Nakagawa, S. (2012). The influence of male age on within-pair and extra-pair paternity in passerines. *Ibis*, 154(2), 318–324. <https://doi.org/10.1111/j.1474-919X.2011.01209.x>
- Cooney, C. R., Sheard, C., Clark, A. D., Healy, S. D., Liker, A., Street, S. E., Troisi, C. A., Thomas, G. H., Székely, T., Hemmings, N., & Wright, A. E. (2020). Ecology and allometry predict the evolution of avian developmental durations. *Nature Communications*, 11, 2383. <https://doi.org/10.1038/s41467-020-16257-x>
- Cramp, S., & Simmons, K. E. L. (1977). *Handbook of the birds of Europe, the Middle East and North Africa: The birds of the Western Palearctic*. Oxford University Press.
- Crates, R. A., Sheldon, B. E. N. C., & Garroway, C. J. (2015). Causes and consequences of individual variation in the extent of post-juvenile moult in the blue tit *Cyanistes caeruleus* (Passeriformes: Paridae). *Biological Journal of the Linnean Society*, 116, 341–351.
- Dale, J., Dey, C., Delhey, K., Kempnaers, B., & Valcu, M. (2015). The effects of life-history and social selection on male and female plumage coloration. *Nature*, 527, 367–370. <https://doi.org/10.1038/nature15509>
- Dawson, A., Hinsley, S. A., Ferns, P. N., Bonser, R. H. C., & Eccleston, L. (2000). Rate of moult affects feather quality: A mechanism linking current reproductive effort to future survival. *Proceedings of the Royal Society B: Biological Sciences*, 267, 2093–2098. <https://doi.org/10.1098/rspb.2000.1254>
- del Hoyo, J., Elliott, A., Sargatal, J., Christie, D. A., & de Juana, E. (Eds.). (2018). *Handbook of the birds of the world alive*. Lynx Edicions.
- Delhey, K., Dale, J., Valcu, M., & Kempnaers, B. (2019). Reconciling ecological rules: Rainfall and temperature predict global colour variation in the largest bird radiation. *Ecology Letters*, 22, 726–736. <https://doi.org/10.1111/ele.13233>
- Delhey, K., Guallar, S., Rueda-Hernández, R., Valcu, M., Wang, D., & Kempnaers, B. (2020). Partial or complete? The evolution of post-juvenile moult strategies in passerine birds. *figshare*, <https://doi.org/10.6084/m9.figshare.12925895.v1>
- Dufour, P., Descamps, S., Chantepie, S., Renaud, J., Guéguen, M., Schiffrers, K., Thuiller, W., & Lavergne, S. (2020). Reconstructing the geographic and climatic origins of long – Distance bird migrations. *Journal of Biogeography*, 47(1), 155–166. <https://doi.org/10.1111/jbi.13700>
- Dunn, P. O., Whittingham, L. A., & Pitcher, T. E. (2001). Mating systems, sperm competition, and the evolution of sexual dimorphism in birds. *Evolution*, 55, 161–175. [https://doi.org/10.1554/0014-3820\(2001\)055\[0161:MSSCAT\]2.0.CO;2](https://doi.org/10.1554/0014-3820(2001)055[0161:MSSCAT]2.0.CO;2)
- Dunning, J. B. J. (2008). *CRC handbook of avian body masses* (2nd ed.). CRC Press Taylor & Francis Group.
- Faccio, M. S. (2018). Tropical frugivorous birds molt and breed in relation to the availability of food resources. *Ornitol Neotrop*, 29, S11–S18.
- Ferns, P. N., & Hinsley, S. A. (2008). Carotenoid plumage hue and chroma signal different aspects of individual and habitat quality in tits. *Ibis*, 150, 152–159.
- Figuerola, J., & Jovani, R. (2002). Ecological correlates in the evolution of moult strategies in Western Palearctic passerines. *Evolutionary Ecology*, 15, 183–192.
- Fogden, M. P. L. (1972). The seasonality and population dynamics of equatorial forest birds in Sarawak. *Ibis*, 14, 307–343.
- Fritz, S. A., & Purvis, A. (2010). Selectivity in mammalian extinction risk and threat types: A new measure of phylogenetic signal strength in binary traits. *Conservation Biology*, 24, 1042–1051. <https://doi.org/10.1111/j.1523-1739.2010.01455.x>
- Ginn, H. B., & Melville, D. S. (1983). *Moult in birds*. British Trust for Ornithology.
- Gosler, A. G. (1991). On the use of greater covert moult and pectoral muscle as measures of condition in passerines with data for the Great Tit *Parus major*. *Bird Study*, 38(1), 9. <https://doi.org/10.1080/00063659109477061>
- Greene, E., Lyon, B. E., Muehter, V. R., Ratcliffe, L., Oliver, S. J., & Boag, P. T. (2000). Disruptive sexual selection for plumage coloration in a passerine bird. *Nature*, 407, 1000–1003. <https://doi.org/10.1038/35039500>
- Griffin, R. H. (2018). *btw: Run BayesTraitsV3 from R*. R package version 2.0.
- Griggio, M., Serra, L., Licheri, D., Campomori, C., & Pilastro, A. (2009). Molt speed affects structural feather ornaments in the blue tit. *Journal of Evolutionary Biology*, 22, 782–792. <https://doi.org/10.1111/j.1420-9101.2009.01700.x>
- Guallar, S., Santana, E., Sierra, B., Verdugo, H., & Gallés, A. (2009). *Paseriformes del Occidente de México: Morfometría, datación y sexado*.
- Hawkins, G. L., Hill, G. E., & Mercadante, A. (2012). Delayed plumage maturation and delayed reproductive investment. *Biological Reviews*, 87, 257–274.
- Heise, C. D., & Moore, F. R. (2003). Age-related differences in foraging efficiency, molt, and fat deposition of gray catbirds prior to autumn migration. *Condor*, 105, 496–504. <https://doi.org/10.1093/condor/105.3.496>
- Howell, S. N. G., Corben, C., Pyle, P., & Rogers, D. I. (2003). The first basic problem: A review of molt and plumage homologies. *Condor*, 105, 635–653. <https://doi.org/10.1650/7225>
- Hoy, S. R., Petty, S. J., Millon, A., Whitfield, D. P., Marquiss, M., Davison, M., & Lambin, X. (2015). Age and sex-selective predation moderate

- the overall impact of predators. *Journal of Animal Ecology*, 84, 692–701. <https://doi.org/10.1111/1365-2656.12310>
- Illera, J. C., & Atienza, J. C. (2002). Determinación del sexo y la edad en la Tarabilla Canaria *Saxicola dacotiae* mediante el estudio de la muda. *Ardeola*, 49, 273–281.
- Ives, A. R., & Garland, T. (2010). Phylogenetic logistic regression for binary dependent variables. *Systematic Biology*, 59, 9–26. <https://doi.org/10.1093/sysbio/syp074>
- Ives, A. R., & Li, D. (2018). rr2: An R package to calculate R^2 s for regression models. *Journal of Open Source Software*, 3, 1028. <https://doi.org/10.21105/joss.01028>
- Jenni, L., & Winkler, R. (1994). *Moult and ageing of European passerines*. Academic Press.
- Jetz, W., Thomas, G. H., Joy, J. B., Hartmann, K., & Mooers, A. O. (2012). The global diversity of birds in space and time. *Nature*, 491, 444–448. <https://doi.org/10.1038/nature11631>
- Johnson, E. I., & Wolfe, J. D. (2017). *Molt in neotropical birds: Life-history and aging criteria*. Taylor & Francis.
- Karger, D. N., Conrad, O., Böhrer, J., Kawohl, T., Kreft, H., Soria-Auza, R. W., Zimmermann, N. E., Linder, H. P., & Kessler, M. (2017). Climatologies at high resolution for the earth's land surface areas. *Scientific Data*, 4, 1–20. <https://doi.org/10.1038/sdata.2017.122>
- Kiat, Y. (2018). Divergent retractor moult: The implications and conditions of moult sequence. *Journal of Avian Biology*, 2018, e01609. <https://doi.org/10.1111/jav.01609>
- Kiat, Y., & Izhaki, I. (2016). Why renew fresh feathers? Advantages and conditions for the evolution of complete post-juvenile moult. *Journal of Avian Biology*, 47, 47–56. <https://doi.org/10.1111/jav.00717>
- Kiat, Y., & Sapir, N. (2017). Age-dependent modulation of songbird summer feather molt by temporal and functional constraints. *The American Naturalist*, 189, 184–195. <https://doi.org/10.1086/690031>
- Kiat, Y., & Sapir, N. I. R. (2018). Life-history trade-offs result in evolutionary optimization of feather quality. *Biological Journal of the Linnean Society*, 125, 613–624. <https://doi.org/10.1093/biolinnean/bly135>
- Kiat, Y., Vortman, Y., & Sapir, N. (2019). Feather moult and bird appearance are correlated with global warming over the last 200 years. *Nature Communications*, 10, 2540. <https://doi.org/10.1038/s41467-019-10452-1>
- López, G., Figuerola, J., Varo, N., & Soriguer, R. (2005). White Wagtails *Motacilla alba* showing extensive post-juvenile moult are more stressed. *Ardea*, 93, 237–244.
- Marchant, S., & Higgins, P. J. (1990). *Handbook of Australian, New Zealand and Antarctic Birds* (Vol. 5–7). Oxford University Press.
- McQueen, A., Kempnaers, B., Dale, J., Valcu, M., Emery, Z. T., Dey, C. J., Peters, A., Delhey, K. (2019). Evolutionary drivers of seasonal plumage colours: Colour change by moult correlates with sexual selection, predation risk and seasonality across passerines. *Ecology Letters*, 22(11), 1838–1849. <https://doi.org/10.1111/ele.13375>
- Menezes, J. C. T., & Santos, E. S. A. (2020). Habitat structure drives the evolution of aerial displays in birds. *Journal of Animal Ecology*, 89, 482–493. <https://doi.org/10.1111/1365-2656.13132>
- Minias, P., & Iciek, T. (2013). Extent and symmetry of post-juvenile moult as predictors of future performance in Greenfinch *Carduelis chloris*. *Journal of Ornithology*, 154, 465–468. <https://doi.org/10.1007/s10336-012-0911-6>
- Minias, P., Włodarczyk, R., Surmacki, A., & Iciek, T. (2015). Silver spoon effects on plumage quality in a passerine bird. *Royal Society Open Science*, 2, 140459. <https://doi.org/10.1098/rsos.140459>
- Naef-Daenzer, B., & Gruebler, M. U. (2016). Post-fledging survival of altricial birds: Ecological determinants and adaptation. *Journal of Field Ornithology*, 87, 227–250. <https://doi.org/10.1111/jof.12157>
- Nakagawa, S., & de Villemereuil, P. (2019). A general method for simultaneously accounting for phylogenetic and species sampling uncertainty via Rubin's rules in comparative analysis. *Systematic Biology*, 68, 632–641. <https://doi.org/10.1093/sysbio/syy089>
- Newton, I. (2009). Molt and plumage. *Ringing & Migration*, 24(3), 220–226. <https://doi.org/10.1080/03078698.2009.9674395>
- Orme, D., Freckleton, R., Thomas, G., Petzoldt, T., Fritz, S., Isaac, N., & Pearse, W. (2018). *caper: Comparative analyses of phylogenetics and evolution* in R. R package version 1.0.1.
- Pagani-Núñez, E., & Hernández-Gómez, S. (2013). Extent of post-juvenile moult in wintering Common Chiffchaffs *Phylloscopus collybita* is related to indices of individual quality. *Revista Catalana d'Ornitologia*, 29, 35–42.
- Pebesma, E. (2018). Simple features for R: Standardized support for spatial vector data. *The R Journal*, 10(1), 439. <https://doi.org/10.32614/RJ-2018-009>
- Pérez-Granados, C. (2020). Post-juvenile and post-breeding moult of the Black Wheatear *Oenanthe leucura* in south-eastern Spain: Slowed down due to climatic aridity? *Ardea*, 108, 21. <https://doi.org/10.5253/arde.v108i1.a6>
- Peters, A., Kingma, S. A., & Delhey, K. (2013). Seasonal male plumage as a multi-component sexual signal: Insights and opportunities. *Emu*, 113, 232–247. <https://doi.org/10.1071/MU12083>
- Poole, A. (Ed.). (2005). *The birds of North America online*. Cornell Laboratory of Ornithology. Retrieved from <http://bna.birds.cornell.edu/BNA/>
- Pyle, P. (1997). *Identification guide to North American birds. Part I*. Slate Creek Press.
- R Development Core Team. (2019). *R: A language and environment for statistical computing*. R Foundation for Statistical Computing.
- Rabosky, D. L. (2015). No substitute for real data: A cautionary note on the use of phylogenies from birth – Death polytomy resolvers for downstream comparative analyses. *Evolution*, 69, 3207–3216. <https://doi.org/10.1111/evo.12817>
- Revell, L. J. (2012). phytools: An R package for phylogenetic comparative biology (and other things). *Methods in Ecology and Evolution*, 3, 217–223. <https://doi.org/10.1111/j.2041-210X.2011.00169.x>
- Rockey, W. L. (2016). Preformative molt adjustment in phenologically divergent populations of the Lesser Goldfinch (*Spinus psaltria*). *The Wilson Journal of Ornithology*, 128, 70–74.
- Rohwer, S., Ricklefs, R. E., Rohwer, V. G., & Copple, M. M. (2009). Allometry of the duration of flight feather molt in birds. *PLoS Biology*, 7(6), e1000132. <https://doi.org/10.1371/journal.pbio.1000132>
- Rymkevich, T. A., & Bojarinova, J. G. (1996). Variation in the extent of postjuvenile moult in the Great Tit near Lake Ladoga (Russia). *Bird Study*, 43, 47–59. <https://doi.org/10.1080/00063659609460995>
- Ryzhanovskiy, V. N. (2017). Completeness of seasonal molting in passerine birds (Aves, Passeriformes) in Northwestern Siberia. *Contemporary Problems of Ecology*, 10, 502–510. <https://doi.org/10.1134/S1995425517050122>
- Scheffers, B. R., De Meester, L., Bridge, T. C. L., Hoffmann, A. A., Pandolfi, J. M., Corlett, R. T., Butchart, S. H. M., Pearce-Kelly, P., Kovacs, K. M., Dudgeon, D., Pacifici, M., Rondinini, C., Foden, W. B., Martin, T. G., Mora, C., Bickford, D., & Watson, J. E. M. (2016). The broad footprint of climate change from genes to biomes to people. *Science*, 354(6313), aaf7671. <https://doi.org/10.1126/science.aaf7671>
- Senar, J. C., Copete, J. L., & Martin, A. J. (1998). Behavioural and morphological correlates of variation in the extent of postjuvenile moult in the Siskin *Carduelis spinus*. *Ibis*, 140, 661–669. <https://doi.org/10.1111/j.1474-919X.1998.tb04712.x>
- Serra, L., Griggio, M., Licheri, D., & Pilastro, A. (2007). Molt speed constrains the expression of a carotenoid-based sexual ornament. *Journal of Evolutionary Biology*, 20(5), 2028–2034. <https://doi.org/10.1111/j.1420-9101.2007.01360.x>
- Surmacki, A., Siefferman, L., & Yuan, H.-W. (2011). Effects of sunlight exposure on carotenoid-based and structural coloration of the blue-tailed bee-eater. *The Condor*, 113(3), 590–596. <https://doi.org/10.1525/cond.2011.100167>

- Test, H. (1940). Effects of natural abrasion and oxidation on the coloration of flickers. *Condor*, 42, 76–80. <https://doi.org/10.2307/1364322>
- Tobias, J. A., Montgomerie, R., & Lyon, B. E. (2012). The evolution of female ornaments and weaponry: Social selection, sexual selection and ecological competition. *Philosophical Transactions of the Royal Society B: Biological Sciences*, 367, 2274–2293. <https://doi.org/10.1098/rstb.2011.0280>
- Tung Ho, L. S., & Ané, C. (2014). A linear-time algorithm for gaussian and non-gaussian trait evolution models. *Systematic Biology*, 63, 397–408. <https://doi.org/10.1093/sysbio/syu005>
- Vagasi, C. I., Pap, P. L., Vincze, O., Benkő, Z., Marton, A., & Barta, Z. (2012). Haste makes waste but condition matters: Molt rate – Feather quality trade-off in a sedentary songbird. *PLoS ONE*, 7, e40651. <https://doi.org/10.1371/journal.pone.0040651>
- Wilman, H., Belmaker, J., Simpson, J., de la Rosa, C., Rivadeneira, M. M., & Jetz, W. (2014). EltonTraits 1.0: Species-level foraging attributes of the world's birds and mammals. *Ecology*, 95, 2027. <https://doi.org/10.1890/13-1917.1>
- ## DATA SOURCES
- Alström, P., & Mild, K. (2003). *Pipits and wagtails of Europe, Asia and North America. Identification and systematics*. Christopher Helm.
- Barshep, Y., & Manu, S. A. (2013). Breeding phenology and molt of the endemic Bannerman's Weaver *Ploceus bannermani*. *Ostrich*, 84, 231–233.
- Botero-Delgado, E., Bayly, N., & Gómez-Montes, C. (2012). Ciclos de muda en *Diglossa albilatera* (Thraupidae) y evidencia de un patrón en la adquisición del dicromatismo sexual en el género *Diglossa*. *Bol SAO*, 22, 10–16.
- Craig, A. (1996). The annual cycle of wing-moult and breeding in the Wattle Starling *Creatophora cinerea*. *Ibis*, 138, 448–454. <https://doi.org/10.1111/j.1474-919X.1996.tb08063.x>
- Díaz, A., & Hernández, F. (2018). Muda preformativa excentrica en un espécimen de colección de la Tangara azul y amarilla (*Pipraeidae bonariensis darwini*, Bonaparte 1983) (AVES: Thraupidae). *The Biologist*, 16, 273–279.
- Dickey, D. R., & Van Rossem, A. J. (1938). *The birds of El Salvador*. Field Museum of Natural History.
- DuVal, E. H. (2005). Age-based plumage changes in the lance-tailed manakin: A two-year delay in plumage maturation. *Condor*, 107, 915–920. <https://doi.org/10.1093/condor/107.4.915>
- Eyckerman, R., & Cuvelier, D. (1982). The molt of some bird species on Mount Cameroon. *Malimbus*, 4, 1–4.
- Ganpule, P. (2019). Field identification of Sand Lark *Alaudala raytal* and Lesser/Asian Short-toed Lark *Alaudala rufescens/cheleensis*: An unacknowledged pit-fall. *Indian Birds*, 15, 97–111.
- Gauci, C., & Sultana, J. (1979). Molt of the Sardinian warbler. *Il-Meril*, 20, 1–14.
- Gómez, C., Botero-Delgado, E., Bayly, N. J., Moreno, M. I., Páez, C. A. (2012). Documentando estrategias de muda en aves Neotropicales: Ejemplos de la Sierra Nevada de Santa Marta, Colombia. *Ornitología Neotropical*, 23, 129–138.
- Guallar, S. X., Rueda-Hernández, R., & Pyle, P. (2021). Evolution of the preformative molt in Cardinalidae correlates with transitions from forest to open habitats. *Ornithology*, 138, in press.
- Guallar, S., Ruiz-Sánchez, A., Rueda-Hernández, R., & Pyle, P. (2014). Molt topography and its application to the study of partial wing-moult in two neotropical wrens. *Ibis*, 156, 311–320. <https://doi.org/10.1111/ibi.12138>
- Guallar, S. X., Ruiz-Sánchez, A., Rueda-Hernández, R., & Pyle, P. (2016). Molt strategies of ten neotropical forest passerine species. *The Wilson Journal of Ornithology*, 128, 543–555. <https://doi.org/10.1676/1559-4491-128.3.543>
- Guallar, S. X., Ruiz-Sánchez, A., Rueda-Hernández, R., & Pyle, P. (2018). Preformative wing molt in 23 Neotropical resident passerine species. *Ornitología Neotropical*, 29, 3–10.
- Guallar, S., Santana, E., Sierra, B., Contreras, S., Verdugo, H., Gallés, A. (2009). *Passeriformes del Occidente de México: morfometría, datación y sexado*.
- Hartley, I., & McGowan, P. (1991). Molt and biometrics in five birds endemic to Palawan, Philippines. *Forktail*, 6, 74–77.
- Hernández, A. (2012). Molt patterns and sex and age criteria for selected landbirds of southwest Colombia. *Ornitología Neotropical*, 23, 215–223.
- Herremans, M. (1999). Biannual complete molt in the Black-chested Prinia *Prinia flavicans*. *Ibis*, 141, 115–124.
- Howell, S. N. G., Lewington, I., & Russell, W. (2014). *Rare birds of North America*. Princeton University Press.
- Howell, S. N. G., & Webb, S. (1995). *A guide to the birds of Mexico and northern Central America*. Oxford University Press.
- Johnson, E. I., & Wolfe, J. D. (2017). *Molt in neotropical birds: Life-history and aging criteria*. Taylor & Francis.
- Kamtaeja, S., Suwannapoom, C., Sitasuwan, N., & Chomdej, S. (2015). Molt in the stripe-throated Bulbul, *Pycnonotus finlaysoni*: Sexual differences and timing. *Chiang Mai Journal of Science*, 42, 339–348.
- Kawaji, N., & Hirokawa, J. (1998). Complete post-juvenile molt of the Asian Stubtail *Urosphena squameiceps*. *Bulletin of the Japanese Bird Banding Association*, 13, 1–7.
- Kennedy, J. J., Heavyside, J., Jankowski, J. E., & Scholer, M. N. (2018). Molt patterns and sexing and aging criteria for ten species of high elevation landbirds from southeastern Peru. *Ornitología Neotropical*, 29, 63–73.
- Kiat, Y., & Izhaki, I. (2015). Post-juvenile molt in Graceful Prinia *Prinia gracilis*. *Ringing & Migration*, 30, 7–11.
- King, J. (1972). Postnuptial and postjuvenile molt in Rufous-collared Sparrows in northwestern Argentina. *Condor*, 74, 5–16. <https://doi.org/10.2307/1366444>
- Mallet-Rodrigues, F., Castiglioni, G. D. A., & Gonzaga, L. P. (1995). Muda e seqüência de plumagens em *Ramphocelus bresilius* na restinga de Barra de Maricá, estado do Rio de Janeiro (Passeriformes: Emberizidae). *Ararajuba*, 3, 88–93.
- Nakamura, H. (1979). Summer concentration and molt in the Oriental Greenfinch *Garculius sinica*. *Japanese Journal of Ornithology*, 28, 1–27. <https://doi.org/10.3838/jjo1915.28.1>
- Okahisa, Y., Morimoto, G., Takagi, K., & Ueda, K. (2013). Effect of pre-breeding molt on arrival condition of yearling male Narcissus Flycatchers *Ficedula narcissina*. *Bird Study*, 60, 140–144.
- Park, S.-Y., Seo, S.-G., Nam, H.-Y., Cho, S.-Y., & Jin, K.-S.-S.-J.-Y. (2019). *Molt and ageing of passerines*. Korea National Park Research Institute.
- Paxton, E. H., McLaughlin, R., Levins, S., Vanderwerf, E., & Lancaster, N. (2016). *Aging and sexing guide to the forest birds of Hawai'i Island*. Hilo.
- Pinilla, J. (2001). How does the extent of a partial molt vary? Some data for melodious warblers *Hippolais polyglotta* in central Iberia. *Ardeola*, 48, 81–84.
- Prys-Jones, R. P. (1982). Molt and weight of some land-birds on Dominica, West Indies. *Journal of Field Ornithology*, 53, 352–362.
- Pyle, P. (1997). *Identification guide to North American birds. Part I*. Slate Creek Press.
- Pyle, P., Engilis, A., Kelt, D. A., & Pyle, P. (2015). *Manual for ageing and sexing birds of Bosque Fray Jorge National Park and Northcentral Chile, with notes on range and breeding seasonality*. Special Publication of the Occasional Papers of the Museum of Natural Science.
- Pyle, P., Kayano, K., Tranquillo, K., Murphy, K., Wilcox, B. & Arcilla, N. (2017). *Manual for ageing and sexing landbirds of American Samoa, with notes on molt and breeding seasonality*. The Institute for Bird Populations, Point Reyes Station, California.
- Pyle, P., Mcandrews, A., Veléz, P., Wilkerson, R. L., Siegel, R. B., & DeSante, D. F. (2004). Molt patterns and age and sex determination of selected southeastern Cuban landbirds. *Journal of Field Ornithology*, 75, 136–145.
- Radley, P., Cray, A. L., Bradley, J., Carter, C., & Pyle, P. (2011). Molt patterns, biometrics, and age and gender classification of landbirds on Saipan, Northern Mariana Islands. *Wilson Journal of Ornithology*, 123, 588–594. <https://doi.org/10.1676/10-154.1>
- Round, P. D., Nimnuan, S., Phothieng, D., & Chunkao, K. (2014). Molt in the Asian Pied Starling *Sturnus contra* floweri population of Thailand. *Forktail*, 30, 28–33.
- Round, P. D., & Rumsey, S. J. (2003). Habitat use, molt and biometrics in the Manchurian Reed Warbler *Acrocephalus tangorum* wintering in Thailand. *Ringing & Migration*, 21, 215–221.
- Ryder, T. B., & Durães, R. (2005). It's not easy being green: Using molt and morphological criteria to age and sex green-plumage manakins (Aves: Pipridae). *Ornitología Neotropical*, 16, 481–491.
- Salewski, V., Altwegg, R., Erni, B., Falk, K. H., Bairlein, F., & Leisler, B. (2004). Molt of three Palaearctic migrants in their West African winter quarters. *Journal of Ornithology*, 145, 109–116. <https://doi.org/10.1007/s10336-004-0020-2>
- Smith, C., Walker, L. K., & Ewen, J. G. (2015). Age and sex criteria for the hihi (*Notiomystis cincta*) with additional details on molt patterns. *Notornis*, 62, 135–142.
- Svensson, L. (1992). *Identification guide to European passerines*. L. Svensson.
- Tórrez, M. A., & Arendt, W. J. (2016). *La muda en especies de aves de Nicaragua*. UCA Publicaciones.

- Ursino, C., Facchinetti, C., & Rebores, J. C. (2012). Preformative molt in brood parasitic screaming (*Molothrus rufoaxillaris*) and shiny (*M. bonariensis*) cowbirds. *Ornitologia Neotropical*, 23, 163–171.
- Vega-Cortés, N. A. (2017). *Identificación de los eventos de muda y reproducción en aves passeriformes y su relación con las épocas climáticas, en el bosque seco tropical del norte del Tolima*. University of Tolima.
- Vellenga, R. E. (1980). Moults of the satin bowerbird *Ptilonorhynchus violaceus*. *Emu*, 80, 49–54.
- Ward, P. (1969). The annual cycle of the Yellow-vented bulbul *Pycnonotus goiavier* in a humid equatorial environment. *Journal of Zoology*, 157, 25–45. <https://doi.org/10.1111/j.1469-7998.1969.tb01687.x>
- Willoughby, E. J. (1971). Biology of larks (Aves: Alaudidae) in the central Namib Desert. *Zoologica Africana*, 6, 133–176. <https://doi.org/10.1080/00445096.1971.11447408>
- Wolfe, J. D., Chandler, R. B., & King, D. I. (2009). Molt patterns, age, and sex criteria for selected highland Costa Rican resident landbirds. *Ornitologia Neotropical*, 20, 451–459.
- Wolfe, J. D., Pyle, P., & Ralph, C. J. (2009). Breeding seasons, molt patterns, and gender and age criteria for selected northeastern Costa Rican resident landbirds. *The Wilson Journal of Ornithology*, 121(3), 556–567. <https://doi.org/10.1676/08-111.1>
- Yamagishi, S. (1982). Age determination in the Bull-headed Shrike *Lanius bucephalus* based on buff-tips of greater primary coverts. *Journal of the Yamashina Institute for Ornithology*, 14, 96–102. <https://doi.org/10.3312/jyio1952.14.96>
- Yamashina, Y. (1980). *A natural history of Japanese birds*. Shuppan Kagaku.

SUPPORTING INFORMATION

Additional supporting information may be found online in the Supporting Information section.

How to cite this article: Delhey K, Guallar S, Rueda-Hernández R, Valcu M, Wang D, Kempenaers B. Partial or complete? The evolution of post-juvenile moult strategies in passerine birds. *J Anim Ecol*. 2020;00:1–13. <https://doi.org/10.1111/1365-2656.13354>